

SCHOOLS' OUT

2023

Safer schools and innovative
classroom solutions



Web: www.adiglobal.com/uk
Tel: 0161 687 8787
Email: sales.uk@adiglobal.com



14 Times Winners
PSI DISTRIBUTOR OF THE YEAR

ADI
a **resideo** company

Taking education to a new level with ADI

As schools and higher education facilities close for summer, ADI looks at the products installers and integrators can recommend to help create learning environments where security and access is controlled and where technology supports those in the classroom as well as students learning remotely.

The ADI team have selected a range of high-quality products, including fire and security systems, to secure and protect premises and people. There is also a range of display and communication products that make a difference to the learning experience, adding benefits for pupils and teachers.

“Product choice is one part of what makes ADI a leading distributor with products across security, fire and AV. ADI offers leading brands and product solutions that installers need for their projects. For the education sector we offer everything needed to operate a safe, secure and modern teaching environment.”

Simon Allan, ADI UK and Ireland Country Leader

Call your ADI sales contact to learn more or view the products online at www.adiglobal.com/uk



Why Choose ADI?

Our relationships, support, product range and accessibility help you get the best security solutions wherever you are.

Relationships

We're passionate about all things Security, Fire and Pro AV. Our dedicated team go the extra mile to form strong relationships with our customers, to provide the knowledge and experience you need for total peace of mind.

Our Support

We'll help you win business and support you throughout the installation process to help you retain customer loyalty. Our services include assistance with site surveys, commissioning and remote diagnostic services.

Our Product Range

With over 260 leading brands, we have the widest breadth of solutions and the largest stockholding across the industry.

Our Accessibility

Our UK&I business is served by a 100,000 sq. ft. distribution hub based in Manchester and supports the wider ADI network of 28 UK&I branches. Distributing over 4,000 products per day and servicing over 7,500 customers, the hub stocks over 24,000 products from over 260 brands, providing an optimum end-to-end service for customers.

Table of Contents

4-5



6-7



8

Fire Safety in Schools

10-11



12-13



14

AV in Education

15



15



16-17



18-19



20-21



22

Security Solutions in Schools



SCHOOL'S OUT!

HOW CAN WE HELP SCHOOLS REDUCE FALSE ALARMS?

It's nearly time for schools to break up for their six-week summer holidays – the perfect opportunity to get on top of maintenance, cleaning and upgrading their fire alarm system. False alarms in educational premises costs the fire service millions each year – ensuring you fit the correct detector in different environments can significantly help to reduce them.



When false alarms occur, they should be recorded in the fire system logbook under the following descriptions:

Unwanted alarm

An incident like burning toast or steam mistaken for a real fire.

Equipment false alarm

An alarm generated by a piece of equipment which is faulty.

Malicious false alarm

Someone deliberately breaking a Manual Call Point.

False alarm with good intent

Someone incorrectly sensing a fire.

Detectors falsely activating due to toast burning or smoke in science class can be avoided by installing the correct detector. For example:

Standard classroom

An optical detector would be ideal.

Science classroom

Your safest option is an optical detector. However, if the risk assessment allows, you can temporarily isolate local devices when using Bunsen burners, etc. You could specify multi-sensors and use panel functions to go from smoke to 'heat only' mode to prevent false alarms during lessons.

Canteen/kitchen

Install heat detectors, but make sure they are high temperature if near to ovens.

Corridors

Multi-sensors work best to avoid false alarms in busy areas where dirt builds up. Apollo's Discovery and Soteria ranges are the perfect choice due to their multiple modes. BRE reports that replacing existing detectors with intelligent multi-sensor detectors can reduce false alarms by 69%.*

Swimming pool

In wet areas, the only electricals tend to be light fittings – the likelihood of a fire breaking out is low. Subject to your risk assessment, Manual Call Points should be sufficient to protect these areas – a weather proof solution would be best.

*www.bre.co.uk/page.jsp?id=3391

APOLLO'S FIRE DETECTOR RANGES



Each new range incorporates features and advantages of its predecessor:

The foundation for all subsequent addressable ranges – tried, tested, robust and reliable.



Flexible and adaptable to most types of environment, including larger properties. Aids false alarm management.



Advanced protection through integrated isolation to increase loop integrity and patented PureLight® technology for false alarm reduction.

FOCUS: UNWANTED ALARMS

SOLUTION: CHOOSING THE CORRECT DETECTOR FOR THE ENVIRONMENT

Apollo's reliable 'fit and forget' solution, XP95, has been protecting educational premises for more than thirty years. In some circumstances, choosing a more intelligent range, either Discovery or SOTERIA®, could help reduce false alarms.



The main difference between Apollo's XP95, Discovery and SOTERIA® ranges is their resilience to false alarms.

Discovery is more adaptable than XP95, combining sophisticated algorithms and five operating modes to protect more complex environments. The range incorporates drift compensation to enable stable, sustained smoke analysis by continually assessing and adjusting the alarm thresholds.

SOTERIA®, Apollo's latest collection of addressable fire detectors, is the next generation in fire recognition technology. Designed to offer advanced protection, it uses patented PureLight® technology for false alarm reduction, which

incorporates a unique smoke entry path, an improved chamber and an advanced processing centre to help reduce false alarms.



Scan the QR code to find out more!





Safety Technology International

The Stopper® Series



Disrupting teaching time, interfering with exams and causing unnecessary evacuations, false fire alarms remain a troublesome nuisance within the education sector.

Recent Home Office figures revealed false fire alarms remain the largest incident type attended by the Fire and Rescue Services in England for 2019/20, with educational establishments amongst the worst offenders for unwanted fire alarm signals.

Whilst some false activations are caused by accidents; a bouncing ball in the sports hall or a heavy book bag in a bustling corridor, an unfortunate and common cause of false fire alarms is malicious activations.

The first-ever STI call point protective cover, the original Stopper®, came directly at the request of a high school principal in the USA, who experienced a problem with maliciously activated, false fire alarms.

With some pupils determined to avoid lessons, maliciously pressing a manual call point, often seen as a "prank", can be an easy way to force teachers and peers to abandon the classroom and evacuate the building. Government supports fire safety

guidance for educational premises by highlighting "a common problem [in educational premises] is the malicious or accidental operation of manual call points," as such "where break glass call points are provided, vandals can be deterred by fitting liftable covers with audio alarms."

Safety Technology International manufacture a range of protective covers, from integral covers to outdoor and sounder models; there are variations to suit all applications. These covers are specifically designed to prevent false alarms whether accidental or malicious.

Notably over £1 billion is lost every year in the UK due to false alarms. To recoup this cost the London Fire Brigade became the first fire service in the country to recover costs from buildings, such as schools, with a poor false alarm record.

As recommended in BS 5839-1:2017 manual call points can be fitted with a protective cover to prevent false fire alarms. The British Standard Institute

recommends in section 20.2b), that: "All MCPs should be fitted with a protective cover, which is moved to gain access to the frangible element."



Safety Technology International

Another False Fire Alarm?

"Where break glass call points are provided, vandals can be deterred by fitting liftable covers with audio alarms."

- Design for fire safety in schools: Building Bulletin 100



Maximise teaching time and minimise the disruption caused by false fire alarms with protective call point covers from Safety Technology International

Fire Safety in Schools

School and educational establishments are complicated multi-use buildings with areas that contain unique fire hazards, such as unmonitored food tech cooking stations, technology and chemistry labs. Though school fires are thankfully rare with only 1 in 1000 each year according to Zurich insurance, common causes include: arson, accidental fires and neglect of electrical and fire systems.



Regulation and Government Programs

The Regulatory Reform (Fire Safety) Order 2005 covers all UK fire safety practice for non-domestic premises but doesn't provide specific guidance for facilities like schools and universities. This guidance comes from Building Regulations 2010 in relation to fire safety and the means of warning and escape of occupants. In terms of the systems themselves, they fall under BS5839-1. A government paper on fire safety design for schools stipulates that this should be no less than a category L2 system. The legislation requires the appointment of a responsible person/s who must complete the Fire Safety Risk Assessment (FSRA), communicate those risks internally, provide legal mandated fire safety training, plan emergency protocols and implement and maintain fire safety measures.

To help schools invest in their buildings the government recently announced a £1.5bn 'rebuild and repair' programme which should in turn lead to the introduction of enhanced fire system technology.

Fire safety systems and false alarms

Installing a comprehensive fire safety solution including a conventional or addressable fire panel and the right detector in the right areas is critically important for wired and wireless systems. Systems like those in the Apollo REACH and Soteria ranges can reduce false alarms which disrupt teaching time and lead to false evacuations. Whether heat detectors in kitchen areas, optical detectors in classrooms or multi-sensor detectors in busy corridors or science labs, panel functions can switch from smoke to heat. Standard school fire systems include panels, sirens, associated power supplies and manual call points. To protect call points from malicious or accidental operation products like STI's stopper series provide a protective cover in line with BS5839-1:2017.

Fire accessories and safety equipment

In addition to the safety system, in order to conform to regulations additional products are often needed. These may

include emergency exit signage, fire decals, logbooks and of course safety equipment like fire extinguishers and blankets. It's also important that fire doors in educational establishments are held open in a safe and secure way. Fire door retainers are often installed, providing better access and to help with social distancing and ventilation.

Emergency lighting and evacuation route signage

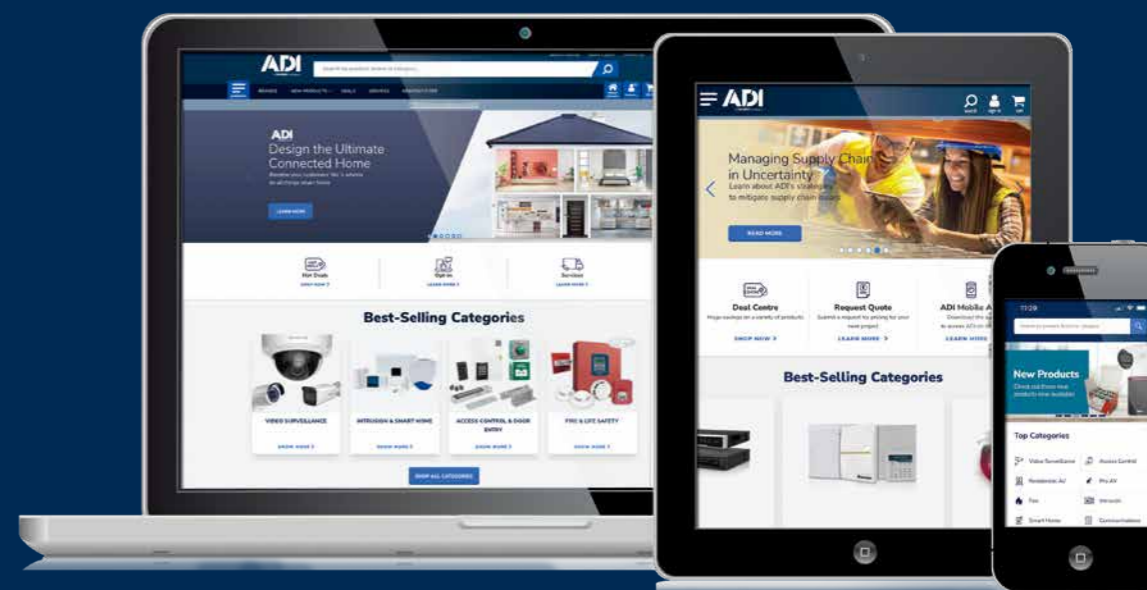
In case of supply failure to the normal lighting and to allow the safe exit of pupils, staff and parents (and others using the facilities for out-of-hours activities) schools must provide sufficient anti-panic illumination in large open areas and evacuation route lighting. Kitchens and other high-risk areas need higher emergency light levels to allow the safe shutdown of equipment. British emergency lighting guidelines insist that each individual emergency light and internally illuminated exit sign must be tested every month as well as a full duration test each year to ensure they will operate when needed; this labour-intensive task can be automated with the use of self-contained addressable or central battery emergency lighting systems, from TM Technologie.

ADI offers fire safety products from leading suppliers whose products have all been tested in line with current UK regulations.



ADI DIGITAL BRANCH

Your 24/7 Shopping Experience for Market Leading Security, Fire and Pro AV Products



Our digital branch allows you to order any time of day or night, explore products and brands and get hourly stock availability information at your fingertips. If you don't have an online account with ADI sign up for one today www.adiglobal.com/uk

The Benefits of an ADI Online Account

- Choose your delivery options
- Access and shop any time of day
- Create quotes and see your pricing
- See statements and order history
- Re-order previous purchases
- Save product lists to shop later or share

Network Horn Speaker

APH30-IP
VOIP | SIP | POE | IP | Networks

The APH30-IP is a POE network horn speaker. It has an integrated TERRACOM IP module with 2 x 20w amplifier, three control inputs and one output contact for triggering events. Integrated DSP tools for audio enhancement and memory storage are just two other features of the APH30-IP.



The weatherproof and lightweight plastic re-entrant horns have been designed for high quality sound reinforcement. Manufactured from a strengthened ABS moulded plastic with UV inhibitors the APH Horns are Low smoke zero Halogen UL-

94V0 and are supplied with a high-grade epoxy coated U bracket. These horns are non-corrosive and resistant to salt laden air with a standard finish in grey, RAL7035. Alternative finishes are available upon request.

Offering high efficiency and clarity of speech, these horns are suitable for speech or signal warnings in hostile environments. They are also ideal for marine and industrial applications as they are unaffected by most chemicals.

Active Horn Loudspeaker

PH20A-24

Penton's PH20A-24 offers a new approach to system design. Derived from our PH20T 100v line unit this speaker now incorporates a high quality, powerful 20w Low Impedance class D amplifier.

Powering the unit requires a 24Vdc power supply and audio can be fed from a standard line level input. It incorporates an internal volume control but also has the option of an external volume control using the PH20-RVC kit.



The PH20A-24 has been developed to provide an ideal solution for audio applications that make use of IP and VoIP network systems. With its wide range of applications the PH20A-24 can be integrated with

CCTV, Security and Public Address systems. The PH20A-24 can provide a more cost effective installation and with its IP66 rating it is suitable for internal or external applications.

PA and communication in schools

The TERRA-SAP is an integrated audio over IP, Mini Audio DSP Processor & dual amplifier, used to integrate local audio sources. It can be used as a stand-alone unit or as part of a fully integrated PA & Lock-down system using TERRA audio over IP devices and analogue PA & VA

audio products. The TERRA-SAP acts as the audio hub for a classroom or any other location. A wide range of audio inputs can be managed from devices such as a Projector, Display, PC, Bluetooth, IR, RF and wireless microphones etc. By using the TERRA-SAP as the audio hub means

that a single set of speakers can be used in the location to broadcast both local and site wide audio. The TERRA-SAP also manages the input priority structure to ensure a simple and seamless system operation.

1

TERRA-SAP

Processor and audio hub that manages a wide range of audio inputs including microphones and speakers

- Processor
- 20W x 2 Class-D amplification
- USB 2.0 interface for music
- Mini-USB input for PC connection
- STP CAT5/6 for audio control



2

RCS6FT/EN

RCS ceiling speakers are stylish and unobtrusive and suitable for background music and speech

- Rated power: 6W
- Steel epoxy coated chassis
- Twin cone driver
- Twin spring mounting
- Easy installation



3

PPM-IT5

Programmable IP paging console with colour touch screen

- Frequency response: -3 dB @ 200 Hz to 8 kHz
- Voltage: 18 - 26 VDC
- Output impedance: 100 Ω
- Colour touch screen
- Echo cancellation



Large Format Displays



Vestel has launched its next generation IFX Series of interactive displays, designed to offer a new level of engagement in the classroom. Available in 65in, 75in and 86in, the Android 9.0-powered screens offer a tailored technology solution for the classroom



A display without limits.

With advanced **multi-touch technology**, remarkable picture quality and powered by **Android 9 OS**, IFX interactive screens put the extraordinary at your fingertips.



20 POINT TOUCH



ANDROID 9.0

HDR

HDR PICTURE QUALITY

400 NIT

400 NIT BRIGHTNESS

VESTEL

With Vestel Visual Solutions, teaching environments can use displays to streamline information around the school in an engaging, simple and streamlined manner.



Vestel's screens enable clear communication throughout the school environment, from displaying safety messages in corridors to showcasing sports results and administrative information in reception areas, or menus in cafeterias.

New Interactive screens support classroom engagement with a variety of applications and industry-leading audio-visual performance.

Vestel's range include the P series which delivers outstanding high-res picture quality with a super slim design. The P series screens are ideal

for areas with high ambient lighting such as sports halls, corridors/ reception rooms and dining areas and are built and tested for 24/7 usage.

Built-in simplicity allows school staff to play back content as needed or run to a specific schedule.

The displays can be used in both portrait and landscape orientation and wireless access means information can be kept up to date without any disruption in high traffic areas.

The range also includes the IFM series 75" interactive display. Utilising advanced multi-touch technology, anti-glare tempered glass, with remarkable 4K picture and video display quality, making it a great solution for collaborative, interactive learning.





AV technology in education has changed dramatically over the last few years, driven in part by a growth in remote learning and interactive tablet trends, and we see this in classrooms from early years through to universities.

Interactive Displays

In the classroom we see a move away from wipe boards and portable screens to using large format digital displays such as the Vestel IFX series providing a more collaborative and visually engaging learning space. For teaching staff, connectivity is essential and the ability to mirror content from a laptop or remotely connect students is important. In further and higher education the ability for distance and remote working is made easier through the shared experience these displays offer. In junior schools reading time becomes much more of a group experience when teachers can display the book on screen and pupils can read along and use the touchscreen capabilities to be creative and engage in a more interactive experience. These displays are also simple to install and

come in a range of sizes, with plug and play installation and wall mounted or freestanding mounts and stands readily available.

Digital Signage

We are now all used to seeing digital signage in retail and hospitality, but what about in further and higher education campuses where sharing information in real-time can add a further communication channel or relay info to students and visitors. It is something we see more of now as we look to cut back on paper and provide up-to-the-minute information. With digital signage you can connect to software providers like NowSignage which include social media integration and live announcements.

Conferencing Facilities

Every education facility needs a modern way of communicating, whether content sharing, messaging or video conferencing. A university is more like a business environment than ever before

so, whether a simple management conferencing set up with dongle, camera and speaker or an auditorium solution where you can control projectors and displays and wired or wireless microphones integrated into wider audio systems, the education system is looking to the future. One of the leading providers is Hall technologies who offer solutions suitable for all sizes.

Audio systems

Sound and information sharing is vital to wellbeing and a conducive learning environment. The school hall is one place that is always going to need a simple to use sound system, if only to shout over the noise. Wider uses for audio systems in education are public address systems that can include both indoor and outdoor speakers, call stations, amplifiers and alarm and alert systems. For larger multi-buildings you may need more than a standard zonal system and Audio over IP systems like Penton's TERRACOM are a great solution and solve the problems in large facilities, reducing cabling and maintaining sound quality across the site.



At ADI we offer all these education AV solutions and more alongside help and support with projects. Our experienced technical support team can aid product selection, project design and provide post-sales technical support.

Capture by ADI



0E-32MON720P-UK

Semi Commercial Display

- 32" Display
- HD Panel
- Max Resolution 1366x768
- Luminance: 400cd/m²



0E-43MON1080-UK

Semi Commercial Display

- 43" Display
- FHD Panel
- Max Resolution 1920x1080
- Luminance: 500cd/m²

AV Solutions Designed for Pros

AVARRO™



WBXMB1330TM
Monitor Bracket 13"-30"
Tilt 100*100

- Tilt only action
- Tilt: 0 to -12 degree
- Vesa mount: 100x100mm (max)
- Load capacity: 15kg (max)



WBXMB1332TSS
Monitor Bracket 13"-32"
Swivel Single Tilt 100*100

- Single arm tilt and swivel
- Tilt: +15 to -15 degree
- Vesa mount: 200x200mm (Max)
- Load capacity: 25kg (Max)



WBXMB1342TSD
Monitor Bracket 13"-42"
Swivel Double Tilt 200*200

- Double arm tilt and swivel
- Tilt: +15 to -15 degree
- Vesa mount: 200x200mm (Max)
- Load capacity: 25kg (Max)



WBXMB3265TM
Monitor Bracket 32"-65"
Tilt 400*400

- Monitor size Up to 65"
- Tilt: +8 to -12 degree
- Vesa mount: 400x400mm (Max)
- Load capacity: 50 kg (Max)

HDMI Cables - 4K 60Hz UHD

HDMI V2.0 Cables suitable for Capture by ADI 24/7 security monitors



Interconnect HDMI high speed cable

- HDMI to HDMI cable
- V2.0, 30AWG, 4K, 60Hz, UHD
- Gold plated

WBXHDMI01V2	1m
WBXHDMI02V2	2m
WBXHDMI03V2	3m
WBXHDMI05V2	5m
WBXHDMI10V2	10m
WBXHDMI15V2	15m

Security made simple.



Free online & in-person training. Unrivalled tech support. If you need us, we'll be here for you.



Our smart security solutions make it easier for you to do business.



Manufactured in the UK with a 5-year guarantee & hassle-free returns policy as standard.



Net2 Access Control

Secures One of England's Oldest Boarding Schools

Christ's Hospital School, Horsham, UK

Christ's Hospital School was founded in 1552. It is known for its diverse student body and exceptional education standards. In 2022, the school needed to replace an obsolete security system with one that would enable simple site security management.

Summer Holidays: A Good Time to Re-evaluate Your School's Security System?

The school summer holidays are on the horizon. Without students on site, teachers and school leaders get the opportunity to refurbish infrastructure, update classrooms, and plan for the academic year ahead.

This valuable time can also be used to tighten school security and streamline the everyday running of an education facility with smart access control systems.

Access control allows people to move freely around a building, whilst also ensuring specific areas like offices and staff rooms benefit from higher security. Our solutions can be used as an effective registration tool, providing easy, automated reporting of who is on-site.

What other benefits can access control and video door entry provide to education facilities?

- **Multiple user groups:** easily set up your building using groups, such as 'students' and 'teachers'.
- **'On the go' system management:** view events and alerts remotely
- **Card designer:** personalise cards with staff and student photos
- **Reports:** build custom reports about user events
- **Anti-passback:** prevents students or unauthorised users from sharing tokens
- **Emergency lockdown:** secure the site quickly at the touch of a button
- **Video door entry:** a quick way to visually verify visitors before granting access
- **Wireless door handles:** PaxLock Pro can be installed retrospectively using the existing door handle fittings

Solution

Christ's Hospital's Net2 system provides access tokens for all doors, giving detailed reports. Notifications are sent to the security team if students leave their dorms outside of hours or use their token to exit a building after a set time.

David Kennedy, Housekeeping and Security Manager at Christ's Hospital, had used Net2 in a previous job. He said: "I knew Net2 would be a great choice to manage a site of this size, and this time we got to install the Net2 Marine Readers. They're visually appealing, but also provide a clear, lit indication of where the door is, and whether access has been granted or denied."

"I knew Net2 would be a great choice to manage a site of this size, and this time we got to install the Net2 Marine Readers. They're visually appealing, but also provide a clear, lit indication of where the door is, and whether access has been granted or denied."

Overview:

Boarding School Products used:

- 1,350 users
- 144 doors
- Net2 plus 1 door controllers
- Proximity marine readers
- Proximity metal keypads
- Net2 software



Discover the potential of Net2

Sign up for free training. Scan the QR code or visit: paxton-access.com/training



Easy to quote



Easy to install



Easy to work with



Are you Compliant with the latest regulations?

Connectix BS6701 Amendment 1:2017 CPR Cables.

CPR (Construction Products Regulation), was created by the European Union with the aim of improving the safety of buildings. It is a classification system for the performance of construction products in the face of fire, categorising them into performance classes and is common for the whole of Europe.

The BS6701: Amendment 1-2017 standard has specified that the Cca, S1b, d2, a2 euroclass is the minimum standard in the UK.

Connectix manufacture a range of cables that exceed this requirement, offering excellent fire performance making this the ideal choice in high risk locations, such as classrooms and other public buildings. The Cat 5e, Cat6 and Cat6a range of compliant cables will give peace of mind that your installation is meeting all the requirements of this standard.



Reaction to Fire BS EN ISO 1716

Aca
Euro Class

- No reaction to fire
- Does not contribute to fire propagation / heat emission

Example Environments

It will be almost impossible for a cable to meet Class Aca and due to availability, they should only be specified with extreme caution.

Reaction to Fire BS EN 50399

B1ca
Euro Class

- Very low reaction
- Minimum contribution to fire propagation/ heat emission

Example Environments

It's very unlikely that commonly used cables will be classified to Class B1ca

B2ca
Euro Class

- Low reaction
- Combustible, low flame spread & heat release contribution to the fire

Example Environments

Hospitals & airports, public buildings with high density of people

Cca
Euro Class

- Reduced reaction
- Combustible, moderate flame spread & heat release

Public buildings, hotels, schools or office buildings with medium density of people

Dca
Euro Class

- Improved reaction
- Combustible, moderate flame spread & heat release

Minimal cable requirement for general installation in some areas

Reaction to Fire BS EN 60332 1-2

Eca
Euro Class

- Basic reaction
- Combustible, limited fire spread of less than 425mm

Example Environments

Minimal cable requirement for general installation in some areas

Fca
Euro Class

- Undetermined
- Combustible, may have high levels of flammability more than 425mm

More likely to be used in external applications

Classes A to E have to be tested by an independent authorised laboratory. Most cables will fall into classes B2ca to Eca. Fca cables are untested. Cables with Fca ratings are mostly intended for external installations.

ADI Ref	Description
001-003-003-68	CAT5e Cable, 24/4 Solid PC, U/UTP, LSZH, Cca
001-003-005-68	CAT6 Cable, 23-4 Solid PC, U-UTP FR-LSZH Shielded, B2ca
001-003-003-08	CAT6A Cable, 23/4 Solid BC, U/FTP, B2ca LSZH

Structured Cable

Easy Range

Connectix Easy RJ45 Connectors have been designed with speed and precision in mind.

The UTP modular plugs are made from high quality engineering plastic with brass gold over nickel plating contacts. The crimp tool allows you to cut, strip, crimp and terminate a plug all in one with zero wastage or mess, meaning less time on-site, and less interruptions to the daily busy life of a classroom.

Connectix 'Easy' range of RJ45 pass through plugs are made from high quality engineered plastic with brass gold over nickel plating contacts.



ADI Ref	Description
EZ-C6-UTP	CAT6 UTP RJ45 Easy Connector
EZ-C6-FTP	Connector COP Easy RJ45 Cat6 FTP
EZ-CRIMP	Copper Easy RJ45 Connector Crimp Tool

Features and Benefits

- Easy to verify RJ45 568A or 568B colour code
- Gold Plated Contacts
- For best results use Connectix Easy RJ45 Crimp Tool
- Cat6 Performance

Advanced Storage for Smart Video Solutions



WD Purple™ Pro / WD Purple



Capacity*	12TB	10TB	8TB	6TB	4TB	3TB	2TB
Model Number	WD121PURP	WD101PURP	WD8001PURP	WD63PURZ	WD42PURZ	WD30PURZ	WD22PURZ

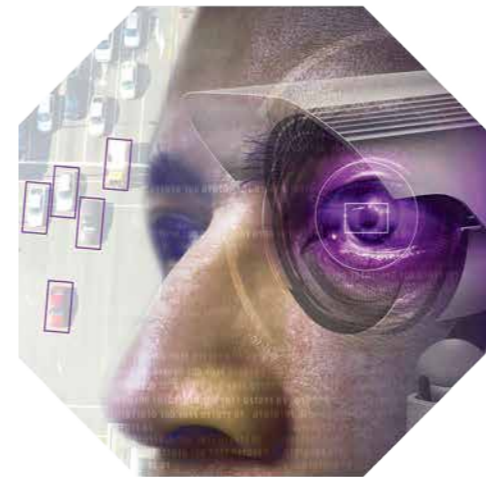


Capacity*	32GB	64GB	128GB
Model Number	WDD032G1P0A	WDD064G1P0A	WDD128G1P0A

Be ready with our thoughtfully calibrated storage solutions designed for smart video. From raw video to AI, endpoint to cloud, our products deliver reliability and longevity, support multi-streams and offer scalable capacities and built-in analytics - all from Western Digital®.



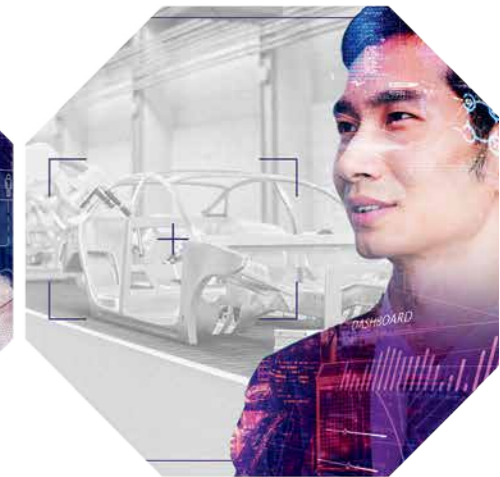
FOR A SMARTER WORLD



See More.



Learn Faster.



Act Smarter.



Purpose-Built for Smart Video

The Smart Video Storage Solutions from Western Digital® are ready to empower and accelerate the explosion in real-time video data and AI. The proven and trusted WD Purple™ portfolio is purpose-built for smart video systems that operate 24/7, providing ultra-reliable and durable smart video recording from camera to cloud.



Learn more at westerndigital.com



Schools and other educational facilities have a duty of care to both staff and pupils and are legally responsible to provide a safe environment, so security is vital. Having the right solution addresses the risk from intruders, vandalism or arson and if required helps to monitor and restrict the movement of people, assets and vehicles.

Integrated security solutions

Educational buildings from multi-building primary schools to multi-level universities and colleges may benefit from integrated security systems including access control, CCTV, intruder alarms, fire detection and management systems. The use of Internet Protocol (IP) technology which allows communications across several products creates a connected solution.

Access control systems in education

Schools and further education sites have a need to restrict access both in and out to specific people, be that staff, pupils or support services. Entry points require physical access control so doors

can be fitted with door closers and magnetic locks, some sites also can have revolving doors, turnstiles or barriers to limit access to one person at a time. Door entry systems often include some form of smart lock like the Pax Lock Pro from Paxton or entry ID device like a pin reader, RFID, fob, swipe card or smart card reader or in some instances biometric readers. Since Covid there has been more of a trend for contactless door entry systems which utilise door controllers at the heart of the system, controlling multiple doors and when and who has access.

Intrusion and perimeter protection

There is a need to protect educational premises from break-ins and theft and intruder systems in schools are often monitored remotely and connected to an Alarm Receiving Centre (ARC), enabling trained and quick response

out of hours. Intruder systems also often incorporate panic alarms which alert a person or response service in an emergency. Intruder systems often form part of a wider integrated security solution that combined with perimeter detectors, outdoor lighting, CCTV systems and even gate control and number plate recognition which can provide peace of mind for schools and higher education facilities.

Intruder systems should be compliant with PD 6662:2017 the scheme which enables security systems to be installed and maintained in accordance with published British and European Standards.

ADI offers professional installers and system integrators a wide range of security solutions whether your project is a single site early-years setting or a multi-site, multi-level university campus.

ADI ADDED VALUE

Looking for Support with Your Next Project?



Our team will support your project from inception to completion, so your project is completed on time, within budget and with optimum security solution.

We Offer:

- 
COMMISSIONING
- 
TRAINING
- 
SYSTEM DESIGN
- 
PRE-BUILD & CONFIG
- 
SITE SURVEYS
- 
TROUBLESHOOTING
- 
PRODUCT DEMOS
- 
SPRAY PAINTING SERVICES



Call

Tech Support: +44 (0) 161 687 8789

UK Sales: +44 (0) 161 687 8787

IE Sales: +353 (0) 1 450 1366



Click

www.adiglobaldistribution.co.uk

www.adiglobal.ie

UK: sales.uk@adiglobal.com

IE: dublin.ie@adiglobal.com



Collect

28 Branches across UK & Ireland

Order by 5pm for next day delivery



Mobile app

Download the ADI app

Easy, fast access to products and account information

