

# COMMERCIAL SOLUTIONS

Tailored solutions for commercial spaces

In commercial environments, the demand for integrated approaches has reached new heights.

**Web:** [www.adiglobal.com/uk](http://www.adiglobal.com/uk)  
**Tel:** 0161 687 8787  
**Email:** [sales.uk@adiglobal.com](mailto:sales.uk@adiglobal.com)





# HELPING SECURITY PROFESSIONALS SAFEGUARD COMMERCIAL SPACES.

Whether safeguarding commercial buildings, warehouses or data centres, ADI's range encompasses cutting-edge solutions for security, access control, fire safety and professional AV installations. As the leading distributor of security, fire, and AV solutions, ADI stands at the forefront, offering a diverse array of high-quality products from leading brands. With a commitment to

excellence, ADI ensures that businesses can seamlessly integrate these vital components, fostering efficiency and reliability in their operations. Our products are readily accessible online, in branch, or through our dedicated sales team, serving customers across the UK and Ireland with unparalleled quality and service.

"At ADI, we are committed to innovate and expand our range of solutions for commercial projects. We deliver a wide range of stocked products and offer unparalleled support which ensures that our customers can thrive in today's market."

Simon Allan, ADI UK and Ireland Country Leader

Call your ADI sales contact to learn more or view the products online at [www.adiglobal.com/uk](http://www.adiglobal.com/uk)

- 4-5 |
- 6-7 |
- 8-9 |
- 10-11 |
- 12-13 |
- 15 | Challenges in Data Centres
- 16-17 |
- 19 |
- 20-21 |
- 22 |
- 23 |
- 24 | Solutions for Commercial Buildings and Warehousing
- 25 |
- 26-27 |
- 28-29 |
- 30-31 |



# Smart buildings bring in a new era of safety and efficiency.

## Smart buildings bring in a new era of safety and efficiency

We live in a time that's accelerated the need for public environments to adapt to new safety and security measures while maintaining productivity. Smart buildings answer this need by combining technology with data and the ability for existing building systems to communicate with one another. The result of this new integration is a smoother, synchronized environment that operates more safely and efficiently. Run on a single or distributed platform, a Building Management System (BMS) acts as the structure's artificial intelligence, which combines large amounts of data across platforms and identifies trends in use and operations. A BMS can effectively reduce energy and improve occupant comfort.

## Smart is secure

Commercial buildings, including campus facilities, factories, retail, and warehouses are among the first wave of high IQ structures. One of their key benefits is increased security. As the creation of this integration is crafted, IP cameras will be directly connected and become common sensors in buildings. This will bring with them a spectrum of opportunities to solve beyond-security issues. And they will be a vital technology in ensuring a safe return to the workplace.



# For all your commercial building needs

Modern network video cameras with embedded analytics help you combat loss through detecting and deterring shoplifting, while also ensuring a safer environment for your staff and customers.

## Network cameras

- Wide camera portfolio for high resolution video
- Discreet designs that blend in with the environment
- Height strip cameras for eye-level identification at entrances and exits
- Cameras compatible with public view monitors for deterrence
- 360-degree cameras for overview

## Network speakers

Use speakers for clear, live audio or pre-recorded messages to communicate with customers and staff to enhance store operations

## I/O modules

- Alarm inputs from safe doors, panic buttons, and electronic article surveillance (EAS) system can be used to trigger alerts, recordings or audio messages
- Control other equipment that turns on lights, locks doors or opens gates to make operations more efficient

## Access control

- Easy administration of access to the premises
- Validate entry by comparing live video with card-holder photo
- Investigate incidents with access to control logs combined with video
- Receive alarms when a door is open for too long or forced

## Intercoms

- Easily manage staff access to store and restricted areas
- Remotely manage the entry of visitors, such as delivery drivers
- Receive alerts if cameras are being tampered with or if a door has been forced open

## Network video recorders

Build your solution around our out-of-the-box network video recorders. They come with AXIS Camera Station – our powerful video management software so easy to use that anyone can manage the system, handle incidents and export high-definition evidence. You can also protect third-party privacy by masking objects before exporting your recordings.

## Analytics

Analytics give insights through highly advanced and powerful tools to minimize suspicious behavior and prevent loss

- AXIS Direction Detector – alerts when someone enters or exits in the wrong direction
- AXIS Random Selector – performs random checks without profiling
- AXIS Tailgating Detector – detects tailgating at your entrances when someone follows behind an authorized individual onto your premises. Immediate possible triggers include audio warnings, sending an alert or setting off an alarm

For more information, please visit:

[www.axis.com/en-gb/solutions/commercial-real-estate](http://www.axis.com/en-gb/solutions/commercial-real-estate)



Invented for life



# FLEXIDOME micro 3100i

**DISCREET. RELIABLE.  
SECURE.**



Discreet and compact by design, the new FLEXIDOME micro 3100i cameras offer reliable detection in and around buildings. Like the rest of the IP 3100i family, the micro cameras offer excellent value with HDR imaging and IVA Pro Buildings, making them ideal for retail, schools and office buildings. Thanks to their durable housing, the environmental versions are dust-proof and protected from water with an IP66 rating and impact-resistant with an IK10 rating. The cameras have a built-in Secure Element with Trusted Platform Module (TPM) functionality to store certificates and keys for authentication and encryption securely.

**Built-in intelligence with deep learning**

Based on deep learning, IVA Pro Buildings offers exceptional analytics, an offering unprecedented in this value segment. IVA Pro Buildings is ideal for advanced intrusion detection in and around buildings: it automatically detects persons and vehicles while ignoring false triggers.

Differentiating between actual security events and known false triggers can significantly increase efficiency and reduce expenses by focusing the time spent by security operators on authentic alerts.

**Simply trusted for peace of mind**

Like all our cameras, the 3100i are certified to UL 2900-2-3 Level 2 and IEC 62443-4-1. They are secure by design, an approach centered on a built-in Secure Element with Trusted Platform Module (TPM) functionality, safely storing all certificates and keys needed for authentication and encryption. This method offers extensive user management to ensure only authorized users have access to data. The 3100i cameras are compliant with NDAA regulations for peace of mind on any project.

Discreet	Reliable	Secure
<p>Compact design ideal for discreet surveillance</p>	<p>Advanced intrusion detection in and around buildings</p> <p>Alarm rules such as line crossing, loitering, and object detection</p> <p>Accurate detection and classification of people and vehicles</p> <p>Live alarming and forensic search</p> <p>Plug-and-play (no calibration needed)</p>	<p>Highest level of data security</p>

**NUE-3702-F02**  
**2MP Micro 3100i Surveillance Camera**

- 2.49mm Fixed Lens
- HDR 137°
- IP66
- IK10

**NUE-3703-F06**  
**5MP Micro 3100i Surveillance Camera**

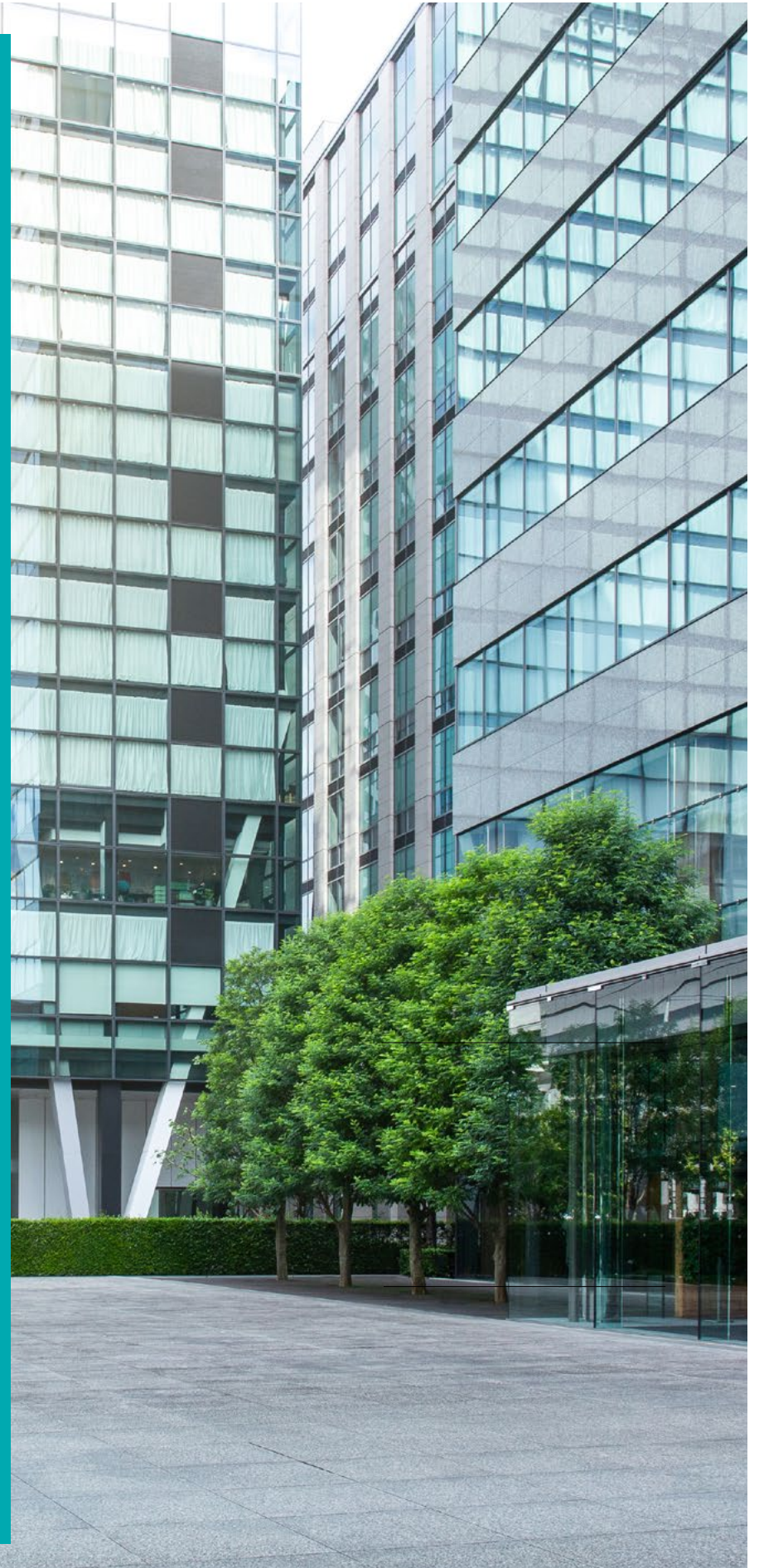
- 6mm Fixed Lens
- HDR 56°
- IP66
- IK10

**NUV-3072-F02**  
**2MP Micro 3100i Surveillance Camera**

- 2.49mm Fixed Lens
- HDR 137°
- Indoor
- IK08

**NUV-3703-F06**  
**5MP Micro 3100i Surveillance Camera**

- 6mm Fixed Lens
- HDR 56°
- Indoor
- IK08





# Capture by ADI

All our Capture by ADI monitors, cameras and NVRs are carefully chosen to deliver high quality and value.



Our exclusive brand offers top performance in small and mid-sized residential and commercial properties.

MADE IN TAIWAN



WARRANTY 3 YEARS

## Cameras & NVRs



- CAP5R4052A**  
**5MP Turret IP Camera**
- 2.8mm, 30M IR
  - Built in MIC
  - SD Card Slot



- CAP5R4152AX**  
**5MP Turret IP Camera**
- 2.8-12mm, 45M IR
  - 2 Way Audio Path
  - Additional MIC & speaker required
  - SD Card Slot



- CAP5R6452X3**  
**5MP Dome IP Camera**
- 2.8-8mm, 30M IR
  - Auto Zoom / Focus
  - SD Card Slot



- CAP5R8952X3**  
**5MP Bullet IP Camera**
- 2.8-8mm, 30M IR
  - Auto Zoom / Focus
  - SD Card Slot



- CAP5R9152A**  
**5MP Bullet IP Camera**
- 2.8mm, 30M IR
  - Built in MIC
  - SD Card Slot



- CAP5R9252AX**  
**5MP Bullet IP Camera**
- 2.8-12mm, 45M IR
  - 2 Way Audio Path
  - Additional MIC & speaker required
  - SD Card Slot



- CAPNVR3104E**  
**NVR 4 Channel PoE NVR**
- 4 channel, 4 PoE
  - Max 10TB HDD
  - 120FPS
  - 65W



- CAPNVR3108E**  
**NVR 8 Channel PoE NVR**
- 8 channel, 8 PoE
  - Max 10TB HDD
  - 240FPS
  - 96W



- CAPNVR3116E**  
**NVR 16 Channel PoE NVR**
- 16 channel, 16 PoE
  - Max 10TB HDD
  - 480FPS
  - 195W



## Affordability without compromise

- 14 quality models ideal for small and medium installations
- Full NDAA compliance for trusted cybersecurity
- Intelligent analytics including virtual area and line crossing
- NVRs support full 4K monitor output for clear displays



[www.hanwhavision.eu](http://www.hanwhavision.eu)

### A Series Security Solutions



**ANE-L6012R**  
**2MP Super-Compact IR Flateye Camera**

- Built-in 3mm fixed lens
- 20m IR
- IP67 IK10



**ANE-L7012L**  
**4MP White Light Turret Camera**

- Built-in 3mm fixed lens
- IP66



**ANE-L7012R**  
**4MP Super-Compact IR Flateye Camera**

- Built-in 3mm fixed lens
- 20m IR
- IP67 IK10



**ANO-L7082R**  
**4MP IR Bullet Camera**

- 3.3-10.3mm varifocal lens
- 30m IR
- IP66



**ANV-L6082R**  
**2MP IR Outdoor Dome Camera**

- 3.2-10mm varifocal lens
- 30m IR
- IP66 IK10



**ANV-L7082R**  
**4MP IR Outdoor Vandal Dome Camera**

- 3.3-10.3mm varifocal lens
- 30m IR
- IP66 IK10



**ARN-1610S**  
**16 Channel PoE NVR**

- Up to 16 channels
- 8MP resolution



**ARN-810S**  
**8 Channel PoE+ NVR**

- Up to 8 channels
- 8MP resolution



**SBV-A14B**  
**Backbox Adapter**

- Use with Wisenet A & Q Series cameras
- Fits standard gangboxes
- Compatible with SBP-300KMW1 corner mount



# HONEYWELL 35 SERIES IP SECURITY CAMERAS

Enhance the security of your premises with intelligent video surveillance from the Honeywell 35 Series Cameras made especially for small-to-medium sized businesses and sites. Our most cost-effective cameras use built-in AI analytics to give you a smart set of extra eyes at all hours.

The 35 Series is available in a wide range of camera types and resolutions, offering exceptional visual clarity, flexible system integration, secure data transmission and easy installation.



Superior HD image quality up to 8MP



Flexible surveillance



Onboard video storage



Smart motion detection and analytics



Easy to install and use



**5 YEAR WARRANTY**



# SMART CAMERAS SAFE BUILDINGS

Traditional motion detection is simplistic: it just looks for pixel changes. This leads to a higher rate of false alarms. The 35 Series uses an AI algorithm that knows what it's looking at, so that you only receive alarms when a person or vehicle is seen. We call that smart motion detection. *You'll call it peace of mind.*

## CYBERSECURE NDAA COMPLIANT

Honeywell 35 Series IP Cameras contain no content or material from any companies or their subsidiaries prohibited under NDAA.

## STAY COMPLIANT

- ONVIF Profile S, G, T compliant.
- Stream encryption: when integrated with MAXPRO™ or 35 Series network video recorders (NVRs), your data is protected from end to end with AES256 encryption.



## 35 SERIES NVR PLUS CLOUD

### Reduced Liability Costs

Introducing the Honeywell 35 Series Embedded NVRs, a new, robustly-featured, cybersecure and NDAA compliant NVR solution which delivers 4K HD (UHD) video resolution at a cost-effective price and can grow with your business. Choose a 4, 8, or 16 channel NVR with multiple hard drive options and up to 10 TB of internal storage for an ideal and flexible solution to meet your surveillance needs.



## HN35 PRO

HN35 PRO NVRs, a robustly-featured, cost-effective, NDAA Section 889 compliant NVR solution delivering 4K HD (UHD) video resolution perfect for small/medium businesses and enterprises. Choose a 16, 32 or 64 channel NVR with multiple hard drive options and up to 80 TB (8 bays) of internal storage **with fail-over and RAID redundancy features** for a flexible and reliable solution that grows with your business.

## ARTIFICIAL INTELLIGENCE FOR REAL SECURITY

Protect your premises. Prevent shoplifting, theft, fraud, and vandalism. Get early alerts of suspicious activity.

The Honeywell 35 Series is your intelligent eye indoors and outdoors, purpose-built for offices, gaming, buildings – small and medium sites of every size.



- Commercial offices
- Retailers
- Franchises
- Transportation
- Restaurants



# ADI DIGITAL BRANCH

Your 24/7 Shopping Experience for Market Leading Security, Fire and AV Products



Our digital branch allows you to order any time of day or night, explore products and brands and get hourly stock availability information at your fingertips. If you don't have an online account with ADI sign up for one today.

[www.adiglobal.com/uk](http://www.adiglobal.com/uk)



## Your ADI order at your fingertips

Download the ADI app and hop online whenever and wherever you want



[www.adiglobal.com/uk](http://www.adiglobal.com/uk) • 0161 687 8787 • [sales.uk@adiglobal.com](mailto:sales.uk@adiglobal.com)



In the digital age, data centres are the backbone of modern business operations, storing and processing vast amounts of sensitive information. As the importance of these facilities grows, so does the need for robust access control, fire safety, and security measures to ensure the confidentiality, integrity, and availability of critical data.

This article explores the unique challenges data centres face and delves into the applications of advanced technologies in access control, fire safety, and security to safeguard against potential threats.

### Understanding the Unique Challenges of Data Centres

Data centres house an invaluable treasure trove of information, making them prime targets for both physical and digital threats. The dual challenge lies in protecting against unauthorised physical access and environmental hazards like fires. Unauthorised access can lead to data breaches, while environmental threats pose risks to the infrastructure and the integrity of the stored data.

### Access Control Solutions for Data Centres



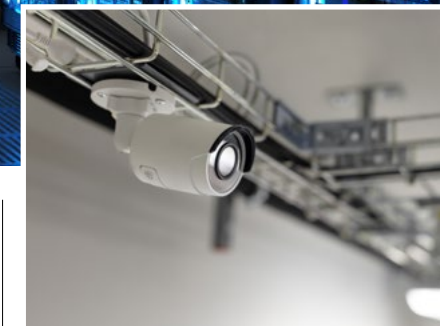
Access control is the first line of defence in securing data centres. Advanced access control systems go beyond traditional methods, incorporating biometric authentication, smart card systems and multi-factor authentication. Biometric measures, such as fingerprint or retina scans, are often used in conjunction with traditional access such as proximity readers; as cards can be stolen, this is used as a two-stage security measure, ensuring that the biometric validation belongs to the correct access card.

### Fire Safety Measures in Data Centres

The ever-present fire risk emanates from the extensive utilisation of electronic equipment, generating considerable heat. Combustion in a server room may occur from various sources, including a faulty hard drive, an electrical short circuit or malfunctioning overhead lights. In the subfloors below, electrical malfunction from a cable or wire can cause a fire in the space and subsequently into the server room above. To counter this concern, advanced fire detection and suppression systems are integral preventive measures in data centres. These systems incorporate various detectors, including smoke detectors, heat detectors, and aspirating detectors. In contrast to conventional sensors, aspirating detectors actively draw in air samples, analysing them for smoke particles and offering an early indication of potential fire threats. Collaborating with fire alarm panels and fire notification devices, these fire detection tools promptly alert building occupants to evacuate and fire suppression systems to activate. This innovative approach significantly amplifies the effectiveness of fire prevention strategies in data centres, enabling swift and targeted responses to forestall potential disasters before escalation.

### Security Protocols and Surveillance

Integrating video surveillance systems with access control forms a robust security solution, addressing multifaceted challenges. The system enables efficient real-time threat detection and response by synergising video surveillance and intelligent analytics software (AI), helping



prevent data loss or breaches. This proactive strategy enhances overall security, promptly identifying suspicious activities, anomalies and potential breaches before they manifest.

The utilisation of infrared cameras can discreetly capture high-resolution imagery of events. These cameras are highly effective in detection and challenging to bypass. Notably, their night vision feature enables round-the-clock security surveillance of data centres indoors or outdoors, ensuring comprehensive protection. Thermal security cameras can also identify overheating units, further bolstering security measures.

### Future Trends and Innovations

As technology advances, data centres must stay ahead of emerging threats. Future trends in access control, fire safety and security include the integration of artificial intelligence (AI) and machine learning (ML) for predictive analysis and automation. These technologies can revolutionise threat detection and response, providing data centres with an even more proactive defence against evolving risks.

### Conclusion

The challenges faced by data centres necessitate advanced technologies and proactive measures to safeguard against potential threats. Access control systems, fire safety measures and surveillance protocols must harmonise for a robust defence strategy.





# Interactive Flat Panel

D5C Series: Advance collaboration to a new level

- Smart meeting
- Speaker tracking
- Automatic framing
- Wireless projection
- Built-in whiteboard
- UHD 4K display
- Built-in 8MP camera
- 8-array microphones
- 8 GB RAM, 12 GB built-in storage
- Mohs 7 hardness glass protection
- Dual OS (Android 13 & Windows)
- Hardware-based eye protection



www.hikvision.com/uk  
support@hikvision.com



# Hikvision LED Displays

Brighten every moment



## LED Splicing Screen (54")

DS-D4212FI-CBFC / DS-D4215FI-CBFC

- HDMI or HDBaseT interface compatible (alternative)
- Built-in LED controller
- Plug-and-play ready
- Self splicing up to 10 screens



## LED Poster Display

DS-D4212MI-070(B) / DS-D4215MI-070(B)

- Ultra thin design, flexible screen size, easy installation
- Up to 10 self-splicing screens with only HDMI cables
- Built-in controller and information display system for easy advertising
- HOB tech ensures reliable protection



www.hikvision.com/uk  
support@hikvision.com

Search Hikvision



# ADI ADDED VALUE

Our comprehensive suite of value-added services is designed to make installations easier



**1000+**  
Pre-Build & Config



**1000+**  
Systems Design



**100+**  
Product Demos



**50+**  
Spray Paints



**50+**  
Site Surveys

2023 STATS



## Contact our project team today

Our experienced, fully accredited Technical Support team can support any install from large to small

0161 687 8789 • ProjectTeam.UK@adiglobal.com



LEDstudio PRESENTS

# the EDGE series



Engineered to replace popular LCD panels & fit onto existing video wall infrastructure.

Designed with sustainability in mind



16:9 aspect ratio



43" & 55" cabinets



Up to 40% energy saving



2 mounting methods  
- Wall  
- Vesa



≤800nits  
≤2000nits  
≤4000nits



- 1080p  
- 4K  
- Custom sizes

43" Edge Pro



Scan QR Code for more information



55" Edge



## Network Horn Speaker

**APH30-IP**  
VOIP | SIP | POE | IP | Networks

The APH30-IP is a POE network horn speaker. It has an integrated TERRACOM IP module with 2 x 20w amplifier, three control inputs and one output contact for triggering events. Integrated DSP tools for audio enhancement and memory storage are just two other features of the APH30-IP.

The weatherproof and lightweight plastic re-entrant horns have been designed for high quality sound reinforcement. Manufactured from a strengthened ABS moulded plastic with UV inhibitors the APH Horns are Low smoke zero Halogen UL-94V0 and are supplied with a high-grade epoxy coated U bracket.



These horns are non-corrosive and resistant to salt laden air with a standard finish in grey, RAL7035. Alternative finishes are available upon request.

Offering high efficiency and clarity of

speech, these horns are suitable for speech or signal warnings in hostile environments. They are also ideal for marine and industrial applications as they are unaffected by most chemicals.

## Active Horn Loudspeaker

**PH20A-24**

Penton's PH20A-24 offers a new approach to system design. Derived from our PH20T 100v line unit this speaker now incorporates a high quality, powerful 20w Low Impedance class D amplifier. Powering the unit requires a 24Vdc power supply and audio can be fed from a standard line level input. It incorporates an internal volume control but also has the option of an external volume control using the PH20-RVC kit.

The PH20A-24 has been developed to provide an ideal solution for audio applications that make use of IP and



VoIP network systems. With its wide range of applications the PH20A-24 can be integrated with CCTV, Security and Public Address systems. The PH20A-24

can provide a more cost effective installation and with its IP66 rating it is suitable for internal or external applications.

## PA & Communication for Intelligent Buildings

The TERRA-SAP is an integrated audio over IP, Mini Audio DSP Processor & dual amplifier, used to integrate local audio sources. It can be used as a stand-alone unit or as part of a fully integrated PA & Lock-down system using TERRA audio over IP devices and analogue PA & VA audio products.

The TERRA-SAP acts as the audio hub for a classroom or any other location. A wide range of audio inputs can be managed from devices such as a Projector, Display, PC, Bluetooth, IR, RF and wireless microphones etc. By using the TERRA-SAP as the audio hub means that a single set of

speakers can be used in the location to broadcast both local and site wide audio. The TERRA-SAP also manages the input priority structure to ensure a simple and seamless system operation.



### TERRA-SAP

Processor and audio hub that manages a wide range of audio inputs including microphones and speakers

Processor

20W x 2 Class-D amplification

USB 2.0 interface for music

Mini-USB input for PC connection

STP CAT5/6 for audio control



### RCS6FT/EN

RCS ceiling speakers are stylish and unobtrusive and suitable for background music and speech

Rated power: 6W

Steel epoxy coated chassis

Twin cone driver

Twin spring mounting

Easy installation



### PPM-IT5

Programmable IP paging console with colour touch screen

Frequency response: -3 dB @ 200 Hz to 8 kHz

Voltage: 18 - 26 VDC

Output impedance: 100 Ω

Colour touch screen

Echo cancellation





# MORLEY-IAS MAX

The Honeywell Morley-IAS Max range offers a cost-effective solution, simple installation, smart commissioning and smooth operation.

A reliable fire alarm system that runs in the background during day-to-day operations.



- Optimised installation with Smart Edge and Advanced Detection technology
- Scalable platform that is future proof
- No special tools or specialised engineers needed for commissioning
- Fast commissioning of the full network from just one panel
- Intuitive touchscreen display and graphic user interface
- Reduced training time for installers and end users

# ASPIRATING SMOKE DETECTION



FAAST FLEX is an aspirating smoke detection system that actively samples the air throughout a facility via an extensive network of pipes with sampling holes. This way, you can detect the early signs of a potential fire threat and take action.

- Reliable performance
- Hassle-free design
- Faster commissioning
- Simpler maintenance
- Enhanced user experience



**FIND OUT MORE**



## Professional Quality Products Without Compromise

ADI PRO is an exclusive brand offering a broad range of products in wire, cabling solutions and tools and hardware.



### Professional, Reliable, Great Value

ADI PRO delivers professional, quality products and exceptional value without compromise

### Our Commitment to You

Fully tested, fully stocked and backed by a competitive warranty, ADI PRO's exclusive products meet or exceed industry standards





Integrated solutions are vital for safety in dynamic commercial spaces. These include fire safety, access control, and professional AV installations.

The need for integrated solutions has become more pronounced in the ever evolving landscape of commercial spaces and warehouses. Ensuring the safety and security of these environments requires a comprehensive approach encompassing disciplines such as fire safety, security

access control and professional audio-visual (Pro AV) installations. This article delves into the critical importance of integrating these three key areas to create a seamless and efficient operation for commercial building and warehousing solutions.

### Fire Safety Integration

Commercial spaces, especially warehouses, are susceptible to various risks, with fire being one of the most devastating. The importance of fire safety in these environments cannot be overstated. Beyond the potential loss of property and goods, the safety of personnel and the continuity of operations are at stake. Inadequate fire safety measures can lead to dire consequences, making it imperative to implement robust systems.



#### Integrated fire safety systems

Integrating detection, suppression and evacuation systems in commercial buildings and warehouses is critical to addressing the multifaceted challenges of fire safety. Modern technologies offer solutions beyond traditional fire alarms. Advanced detection systems, such as smart sensors and aspirating systems, can identify potential fire hazards in real time. These systems can seamlessly integrate with suppression mechanisms, commonly sprinkler or water mist systems, with data and server rooms covered by traditional gas suppression systems. At the same time, automation is crucial in triggering timely evacuations and alerting emergency services, enhancing overall safety measures.

### Security Access Control Solutions



Security challenges in large-scale commercial and warehousing facilities are diverse and complex. These spaces often house valuable assets, making them attractive targets for theft and unauthorised access. Additionally, ensuring the safety of personnel and maintaining a secure perimeter are constant concerns. Robust access control measures are essential to mitigate these risks and uphold the facility's security.

#### Comprehensive access control integration

When integrated seamlessly with other security measures, access control systems significantly enhance the overall security posture of a commercial building or warehouse. Biometric access, physical access control, smart readers and video surveillance work together to create layers of security. Biometric access ensures that only authorised personnel gain entry to specific or sensitive areas, while smart cards provide a trackable means of access. Turnstiles and barrier arms

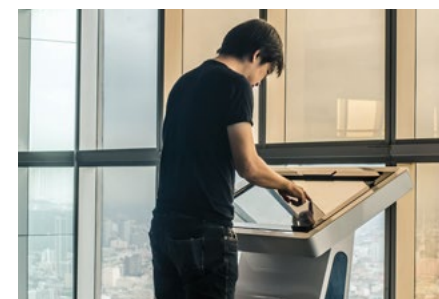
are more obtrusive and add a physical layer of security to help maintain the integrity of the facility's security. Video surveillance complements these measures by offering real-time monitoring and recording, potentially acting as a deterrent and aiding investigations. Effectively managing access permissions is crucial, preventing unauthorised individuals from compromising the facility's security.

### Professional Audio Visual Integration

In addition to safety and security, creating an immersive and efficient commercial environment involves addressing the role of professional audio visual solutions. Pro AV installations, such as digital signage and video walls, contribute significantly to communication, collaboration and the overall user experience within these spaces. Pro AV plays a pivotal role in shaping the environment, whether for presentations, training sessions, or enhancing the ambience of the workspace.

#### Seamless integration of Pro AV with fire safety and security access control

The power of an integrated approach comes to the forefront when Pro AV systems are seamlessly incorporated into fire safety and security access control solutions. Imagine a scenario where an emergency evacuation is triggered due to a fire detection system. Pro AV systems can broadcast clear and concise instructions through Public Address and Voice Alarm systems solutions to guide personnel to safety. In non-emergency situations, Pro AV can enhance security measures by providing real-time monitoring through audio-visual feeds. Centralised control systems ensure that Pro AV, fire safety and access control are managed cohesively, offering a comprehensive solution that caters to the diverse needs of a commercial space.



### Conclusion

Integrating fire safety, security access control and professional audio-visual installations emerges as a cornerstone for success in the dynamic world of commercial building and warehousing. By addressing each discipline collectively, businesses can create an environment that prioritises the safety of personnel, the security of assets, and an enhanced user experience.



## FLEXIBLE + RELIABLE + PRACTICAL

REACH Wireless is Apollo's hybrid wireless fire system range. It offers a range of wireless alternatives to many fire safety products, providing flexibility and convenience in system design. Easy-install wireless units that can be connected to Apollo addressable wired loop systems. Ideal for structures with complex installation conditions and limited downtime windows.



**Increased**  
battery life of field devices – 3 to 5 years (depending on device)



**Fewer**  
batteries per device – two instead of six



**More**  
RF channels 44 (22 pairs) vs XPander's 32



**Less**  
likely to have a dead spot or overlap between expander units/other RF devices



**Smaller**  
REACH Wireless is much more compact than XPander



**Larger**  
sounder tone list is the same as the Apollo wired product range



**VADs**  
EN54-23 VADs Bases: Red flash + White flash (with sounders)



**Detectors**  
Dual-Optical Detector Multi-Detector Heat Detector (programmable A1R or BS)

\* In comparison to the XPander range of devices



**Eaton Intrusion systems**  
Free remote connectivity solutions



## 3 reasons Installers are switching to Eaton



**Free Remote Servicing**

Free to Eaton registered installers and their customers, our tools are backed up by a world-leading Cyber Secure infrastructure, including Estate Management, Remote Servicing, and a dedicated end-user app, all feature an updated and easy-to-navigate design. Installer tools can be accessed via a web portal using a PC, mobile or tablet.



**Train your team in under an hour**

Installers rate the speed at which you can set up an Eaton system which features the same, simple logical menu structure across all the panels. We can train one of your engineers in under an hour and connect to the cloud in under a minute with WPS functionality and auto-adoption.



**MyScantronic Points - Rewards for you**

Earn points for panels, Eaton Installers enjoy MyScantronic points, which can be found inside the box of our best-selling panels and kits. Simply go online, access your account, and register your points which convert to a huge range of High Street shopping vouchers and experiences. Visit [www.myscantronic.co.uk](http://www.myscantronic.co.uk) for more information

## Intrusion Systems



**COM-DATA-4G-WIFI**

**SecureConnect 4G Cloud Communicator Module**

- Direct programming interface via keypad
- Secure connectivity over Wi-Fi network
- Internal and External antenna



**DET-RDC-W**

**Slimline Door Contact**

- Grade 2 radio product
- 3 years battery life using a CR2 battery
- Flexible installation options



**DET-RDTP-G2**

**Radio Dual Tech Detector**

- Pet Tolerant
- 12m (39.4') Range
- Combined passive infra-red and K-band 24GHz microwave detector
- Selectable FSL resistance values
- Adjustable microwave detection range



**DET-RSMOKE**

**Optical Radio Smoke Detector**

- With sounder
- Detection type Optical Sounder level 85db at 3m
- Twist and lock installation for easy fitting and removal



**EXP-R10**

**Wireless Radio Expander**

- 10 zone
- One button push for semi-auto addressing for speed and device numbering integrity
- Green heartbeat LED diagnostics tool
- 16 ohms speaker connection



**i-onG2SM**

**Grade 2 expandable control panel**

- 10 FSL Zones expandable to 50
- Accepts up to 20 bus devices



**i-onG3LM**

**Expandable 400 zone control panel**

- 10 FSL zones expandable to 400



**i-onG3MM**

**Expandable 200 zone control panel**

- 10 FSL zones expandable to 200



**I-ON-HUD-KIT-01**

**Smart Hold-Up Alarm Solution Kit**

- Includes 3 x Portable HUD



TRENDNET®

# RELIABLE WEB SMART PoE+ SWITCHES WITH L2+ FEATURES



Up to 30W per port of PoE power and data over existing Ethernet cables

PoE Power



Supports IPv6, LACP, VLAN, QoS, and IGMP Snooping

IPv6 Ready



Remote cloud management with TRENDnet Hive (Additional fee applies)

Hive Enabled



Bandwidth control per port

Traffic Management



Features such as ACL, SSL, MAC/port filtering, 802.1X, TACACS+, and RADIUS are compatible with layered access controls

Access Control



RMON, SNMP, SNMP Trap, and Port Mirroring support administrator monitoring solutions

Monitoring



**TPE-TG50G-UK**  
5-Port Gigabit PoE+ Switch

- 31W
- Effectively increases available bandwidth on your network
- With PoE+ Port, transfer data and up to 25.5 W of power on a single cable to places where a power outlet is not present
- Quickly and easily set up a wired network with 5 networking ports



**TPE-TG160G**  
16-Port Gigabit PoE+ Switch with Smart Fans

- 19" rack mountable metal housing
- 256W
- 16 x Gigabit PoE+ ports
- 32Gbps switching capacity
- 246W PoE power budget



**TPE-TG182-UK**  
18-Port Gigabit PoE+ Switch

- 240W
- Effectively increases available bandwidth on your network
- Features 18 networking ports to easily establish a local network or expand your existing one
- Built-in power supply to ensure all components are being supplied with accurate voltage



**TPE-1021WS-UK**  
10-Port Gigabit Web Smart PoE+ Switch with 2-SFP Ports

- 130W
- 8 x Gigabit PoE+ ports
- 2 x SFP slots
- 130W PoE power budget



**TPE-2840WS-UK**  
28-Port Gigabit Web Smart PoE+ Switch

- 185W
- Effectively increases available bandwidth on your network
- Electrical power is transmitted along with data in a single cable to devices such as Access Points, IP cameras or IP phones
- With PoE+ Port, transfer data and up to 25.5 W of power on a single cable to places where a power outlet is not present



**TPE-5028WS-UK**  
28-Port Gigabit Web Smart PoE+ Switch

- 370W
- Effectively increases available bandwidth on your network
- Features 28 networking ports to establish large network
- Built-in power supply to ensure all components are being supplied with accurate voltage



Protect every premises with the battery brand

**Tried, tested and trusted for over half a century**



**When your reputation is on the line, it's vital to choose and fit products you can trust.**

Yuasa are renowned for their premium quality batteries, proven to deliver dependable performance and long service life, meaning ultimate peace of mind knowing your systems are safeguarded around the clock. With Japanese precision engineering embedded in each battery, we stand as the #1 choice in Europe for a reason.

Batteries



**CR123A**

**3V Lithium Battery**

- Designed to provide reliable and long-lasting power
- Ideal to use for flashlights, digital cameras, photo and medical equipment, toys and other high-powered electronic devices
- CR123A battery is made with advanced lithium technology



**CR2**

**3V 1Ah Lithium Battery, Non-Rechargeable**

- Professional specification for industrial & consumer applications
- Premium long life product
- High capacity



**CR1/3N/PYR**

**YU-Lite Lithium Series**

- 3V 170mAh
- Non-rechargeable Lithium & rechargeable NiMH options available
- Superior shelf life with minimal discharge
- High capacity



**NP3.2-12**

**Industrial NP Series, 12V 3.2Ah Valve Regulated Lead-Acid Battery**

- Rechargeable battery
- Lead Acid battery chemistry delivers energy to the multipurpose through an easily controlled reaction
- 12 V DC battery - Powers your multipurpose safely



**NP7-12FR**

**Industrial NP Series, 12V 7Ah Valve Regulated Lead Acid Battery**

- Flame Retardant
- 20-Hr Rate Capacity
- General Purpose



**NP17-12FR**

**Industrial NP Series, 12V 17Ah Valve Regulated Lead Acid Battery**

- Flame Retardant
- 20-Hr Rate Capacity
- General Purpose



**NP12-12**

**Industrial NP Series, 12V 12Ah Valve Regulated Lead Acid Battery**

- 20-Hr Rate Capacity
- 12 V DC battery - Powers your multipurpose safely



**REC10-12**

**Industrial REC Series, 12V 10Ah Cyclic Valve Regulated Lead Acid Battery**

- High cyclic performance VRLA battery
- Heavy duty lead Calcium Grids for superior cyclic life
- Double cycle life vs standard VRLA battery



**REC22-12**

**Industrial REC Series, 12V 22Ah Cyclic Valve Regulated Lead Acid Battery**

- High cyclic performance VRLA battery
- Heavy duty lead Calcium Grids for superior cyclic life
- Double cycle life vs standard VRLA battery





## Call

Tech Support: +44 (0) 161 687 8789  
UK Sales: +44 (0) 161 687 8787  
IE Sales: +353 (0) 1 450 1366



## Click

[www.adiglobaldistribution.co.uk](http://www.adiglobaldistribution.co.uk)  
[www.adiglobal.ie](http://www.adiglobal.ie)  
UK: [sales.uk@adiglobal.com](mailto:sales.uk@adiglobal.com)  
IE: [dublin.ie@adiglobal.com](mailto:dublin.ie@adiglobal.com)



## Collect

28 Branches across UK & Ireland  
Order by 5pm for next day delivery



Download the ADI app Easy, fast access to products and account information

