

# Preparing HID Readers for HID Mobile Access<sup>®</sup>

Did you know that **42%** of organizations worldwide are planning to upgrade to mobile-ready systems in the near future?\* Fully configured mobile-enabled HID readers are a key component of a HID Mobile Access system. Read on for guidance about how to prepare HID readers for HID Mobile Access.



When referring to the “mobile-readiness” of HID readers, three terms are commonly used, but what do they mean?

- **Mobile-enabled:** Fully configured for HID Mobile Access
- **Mobile-ready:** Supports HID Mobile Access - only configuration is required
- **Mobile-capable:** Able to be upgraded in the field with a BLE module to support HID Mobile Access

## Step 1

### Hardware Check - Assess Status of HID Readers

#### HID Signo™ Readers

#### Mobile-ready

Only configuration is required.



#### iCLASS SE® / multiCLASS SE® Readers

##### With BLE Module

#### Mobile-ready

Only configuration is required.

##### Without BLE Module

#### Mobile-capable

These readers can be easily upgraded in the field to be fitted with a BLE module to make them mobile-ready. This also adds support for *OSDP*.

Discover how  
**Watch our  
Tech Talk video**



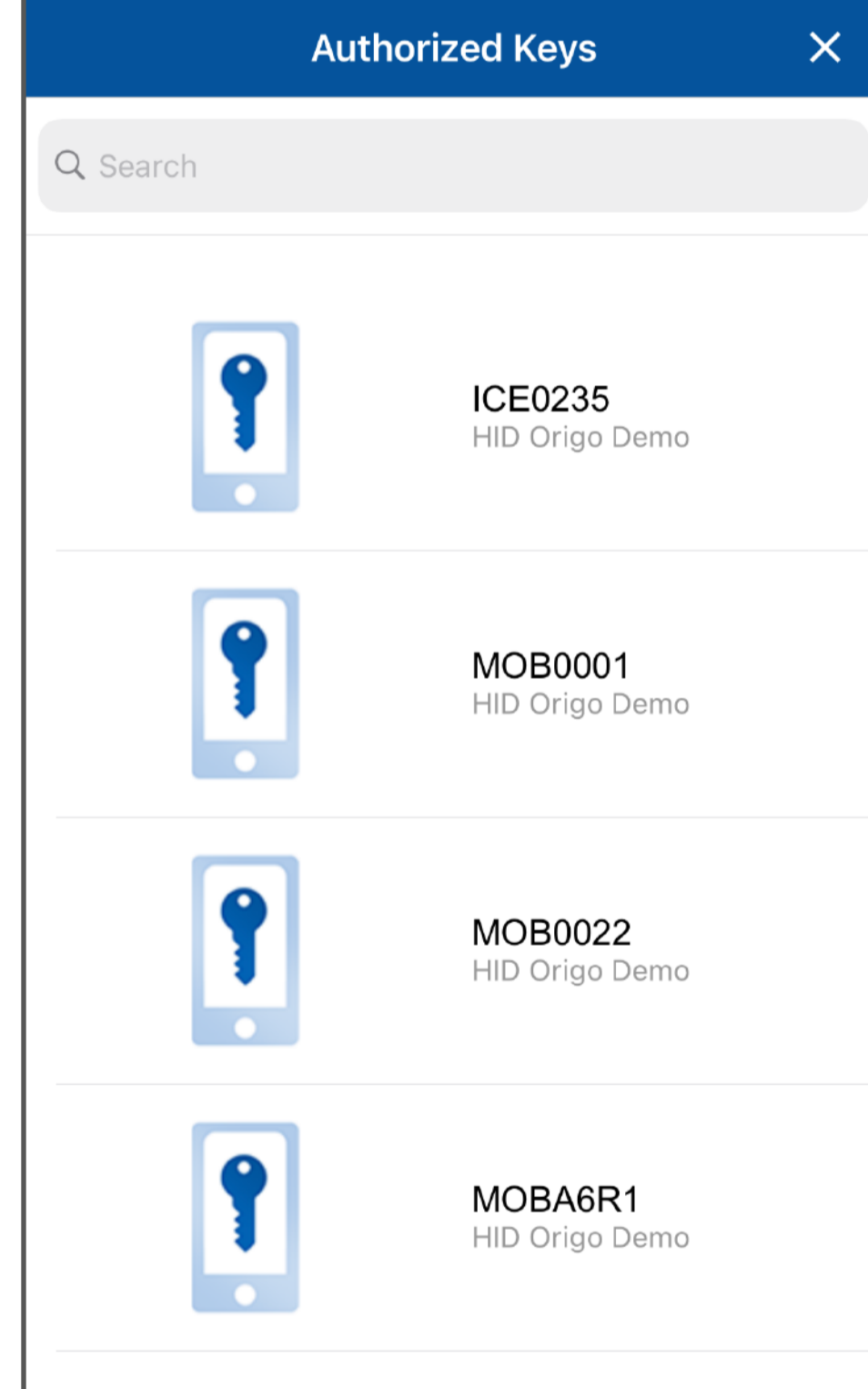
Should you need help in establishing whether your iCLASS SE or multiCLASS SE readers are fitted with a BLE module, please refer to the video above.

## Step 2

### Configuration - Enable HID Readers for HID Mobile Access

#### For HID mobile-ready readers that have already been ordered or installed:

1. Sign in to HID Origo™ — HID Global's physical access control cloud platform.
2. Follow the on-screen instructions to configure readers.
3. HID Origo assigns and issues specific MOB keys.
4. The MOB keys can then be loaded into the readers in the field via **HID Reader Manager™**.



#### Alternatively, for new orders, why not save time and let HID configure the readers?

HID can ship mobile-enabled readers. These are HID Signo readers uniquely configured to an end-user's project requirement by HID. Here's how:

1. Sign in to HID Origo.
2. Follow the on-screen instructions to configure readers.
3. HID Origo assigns and issues specific MOB keys.
4. Provide the MOB keys to HID when ordering.
5. HID configures the readers prior to shipping.
6. A unique part number is created.

#### Did you know?

You can also offer to support managing an end-user's HID Origo portal with the HID Origo Delegated Authorization feature?

### How to Identify an HID Part Number of a Mobile-enabled HID Signo Reader

Example:

40NKS-00-00004M

Reader Model

Body Color

Wiring Connection

Credential Profile

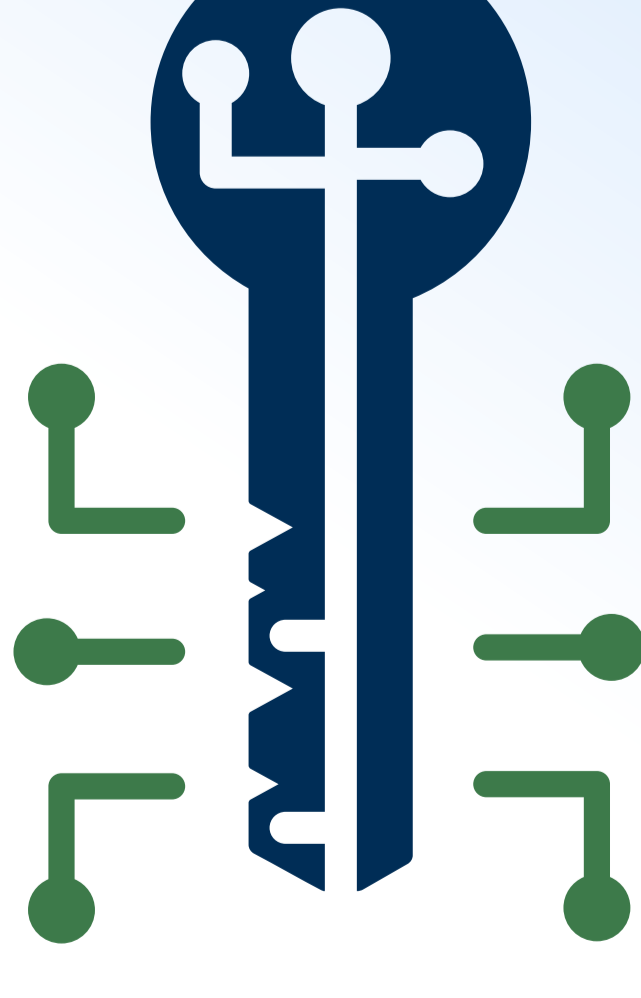
Trim Color

A positive value in the last 6 digits indicates digital configuration by HID.

**000000** represents no digital configuration by HID.



### What Is a MOB Key?



**A MOB key is the shortened name for a mobile keyset.**

The mobile keyset is a reference number for a set of cryptographic keys loaded into a reader. Mobile IDs and reader administration tools will securely authenticate only with readers programmed with a matching keyset. An organization is assigned a mobile keyset upon registration into the HID Mobile Access program.

**HID can help your customers make the move to mobile access in a way that's right for their organization.**

**Request a discovery call today**

\* HID 2022 State of Physical Access Control Report